

Installation Manual

P-2815
AIR SUSPENSION COMPRESSOR
LAND ROVER DISCOVERY (LR3)
LAND ROVER DISCOVERY (LR4)
LAND ROVER RANGE ROVER SPORT



Congratulations on your purchase of an Arnett® air suspension product. We at Arnett Incorporated are proud to offer a high quality product at the industry's most competitive pricing. Thank you for your confidence in us and our product.

Proper installation is essential to experience and appreciate the benefits of this system. Please take a moment to review these installation instructions before you begin to install these components on your vehicle. The removal and installation of air suspension products should only be performed by a fully qualified, ASE Certified, professional.

It is equally important to be aware of all necessary safety measures while installing your new Air Suspension System. This includes proper lifting and immobilizing of the vehicle and isolation of any stored energy to prevent personal injury or property damage.

"Engineered to Ride, Built to Last®"



WARNING: *The air suspension system is under pressure (up to 10 bar, or 150 lbf/in). Verify pressure has been relieved and disconnect power to the air suspension system prior to disassembly. Do not allow dirt or grease to enter the system. Always wear standard hand, ear, and eye protection when servicing the air suspension system.*

Arnett® is committed to the quality of its products. If you have a question or problem with any Arnett product, please contact Arnett by calling **800-251-8993** during normal business hours or email techassistance@arnottinc.com. (In the EU please call **+31 (0)73 7850 580** or email info@arnotteurope.com)

GENERAL INFORMATION:

Reading this manual signifies your agreement to the terms of the general release, waiver of liability, and hold harmless agreement, the full text of which is available at www.arnottinc.com.

- Not to be stored below 5°F (-15°C) or above 122°F (50°C).
- Avoid damage to air lines and cables.
- Removal and installation is only to be performed by fully qualified personnel.
- Use car manufacturer's diagnostic software.

CAUTION: Damage to the vehicle and air suspension system can be incurred if work is carried out in a manner other than specified in the instructions or in a different sequence.



To avoid the possibility of short circuits while working with electric components consult your owner's manual on how to disconnect your battery.



Consult your vehicle owner's manual, service manual, or car dealer for the correct jacking points on your vehicle and for additional care, safety and maintenance instructions. Under no circumstances should any work be completed underneath the vehicle if it is not adequately supported, as serious injuries and death can occur.



If replacing a Hitachi[®] air suspension compressor with the Arnott new compressor, the vehicle **MUST** be re-programmed by your Land Rover dealer. Neglecting to do so can result in compressor failure and void warranty.

AIR SUSPENSION COMPRESSOR REMOVAL

1. OPEN THE HOOD AND LOCATE THE FUSE BOX/BATTERY COVER. (FIGURE 1)



FIGURE 1

2. REMOVE THE FUSE BOX COVERS AND AIR SUSPENSION COMPRESSOR RELAY.
(FIGURES 2, 3, 4)



FIGURE 2



FIGURE 3



FIGURE 4

3. SET STEERING TO STRAIGHT.
4. RAISE VEHICLE.

5. LOCATE AND REMOVE THE THREE (3) BOLTS HOLDING THE COMPRESSOR COVER TO THE VEHICLE. (FIGURES 5, 6, 7)

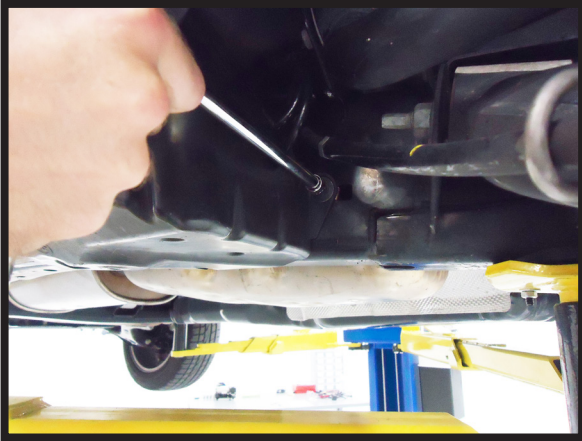


FIGURE 5



FIGURE 6



FIGURE 7

6. SEPARATE THE FIVE (5) CLIPS AND REMOVE THE COVER TO EXPOSE THE AIR SUSPENSION COMPRESSOR. (FIGURES 8, 9)



FIGURE 8



FIGURE 9

7. DISCONNECT THE TWO (2) ELECTRICAL PLUGS FROM THE VEHICLE TO THE COMPRESSOR. (FIGURES 10, 11)



FIGURE 10

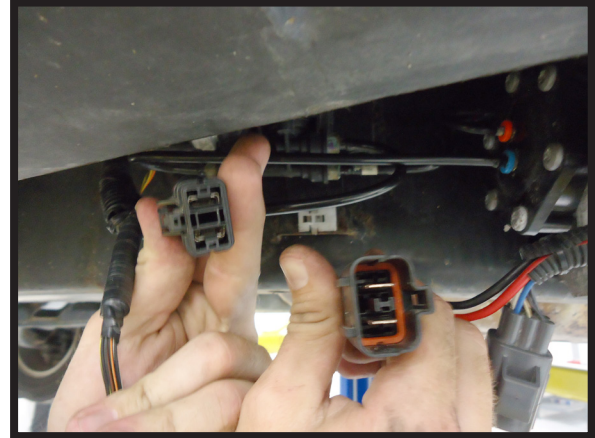


FIGURE 11

8. REMOVE THE AIR HOSE AT THE FRONT OF THE COMPRESSOR BY PUSHING IN THE QUICK CONNECT FITTING AND PULLING OUT THE AIR HOSE. (FIGURE 12)

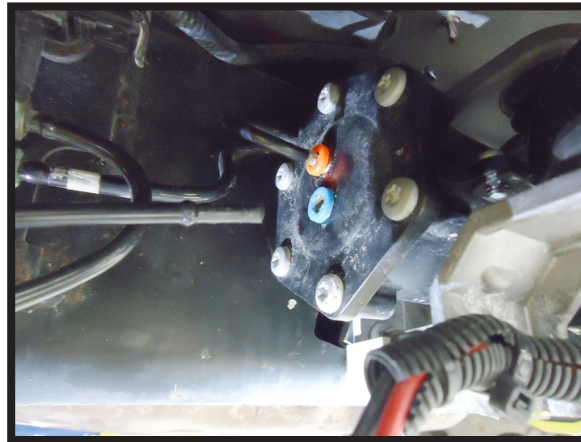


FIGURE 12

9. REMOVE THE TWO (2) AIR HOSES AT THE BACK OF THE COMPRESSOR BY PUSHING IN THE QUICK CONNECT FITTINGS AND PULLING OUT THE AIR HOSES. (FIGURE 13)

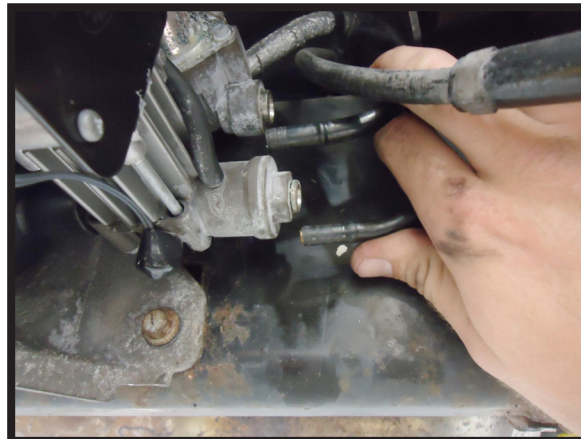


FIGURE 13

10. LOCATE AND REMOVE THE THREE (3) BOLTS HOLDING THE COMPRESSOR/BACKET ASSEMBLY TO THE VEHICLE. SAVE THESE BOLTS FOR RE-INSTALLATION. (FIGURES 14, 15, 16)



FIGURE 14



FIGURE 15

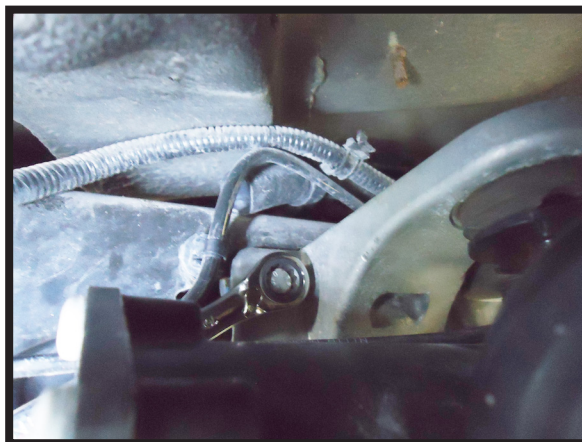


FIGURE 16

11. REMOVE THE COMPRESSOR/BACKET ASSEMBLY FROM THE VEHICLE. (FIGURE 17)



FIGURE 17

12. REMOVE THE "J" SHAPED HOSE FROM THE DISTRIBUTION BLOCK. (FIGURE 18)



FIGURE 18

AIR SUSPENSION COMPRESSOR INSTALLATION



Tighten all nuts and bolts to manufacturer's specifications during the installation process.

1. USING A SUITABLE PIPE CUTTER TOOL, CUT THE AIR SUSPENSION FEED PIPE IN THE POSITION INDICATED. (FIGURE 19)

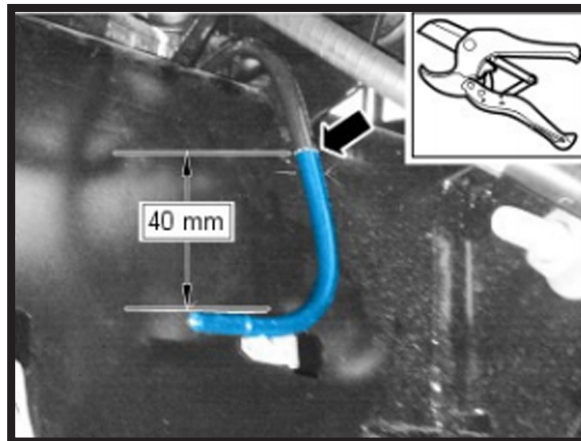


FIGURE 19

2. GREASE AND INSTALL THE FERRULE ONTO THE EXISTING HOSE. (FIGURE 20)



FIGURE 20

3. INSTALL THE NEW AIR FITTING SUPPLIED WITH THE KIT INTO THE DISTRIBUTION BLOCK, TIGHTENING TO 2 NM. (FIGURE 21)



FIGURE 21

4. INSTALL THE SUPPLIED AIR LINES ONTO THE AIR HOSE TOWARD THE BACK OF THE COMPRESSOR MOUNTING AREA. (FIGURES 22, 23)



FIGURE 22



FIGURE 23

5. INSTALL THE TOP HALF OF THE PROTECTIVE COVER INTO PLACE. (FIGURE 24)



FIGURE 24

6. INSTALL THE NEW ARNOTT COMPRESSOR/BRACKET ASSEMBLY ONTO THE VEHICLE USING THE SUPPLIED HARDWARE. (FIGURES 25, 26, 27)



FIGURE 25



FIGURE 26

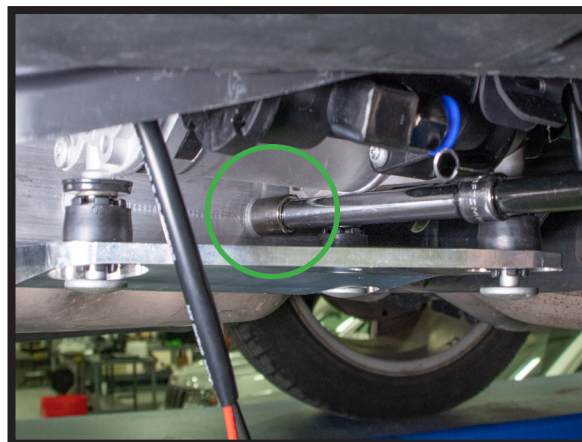


FIGURE 27

7. INSTALL THE EXHAUST AIR HOSE INTO THE QUICK CONNECT ON THE SIDE OF THE COMPRESSOR. (FIGURE 28)



FIGURE 28

8. REMOVE THE WHITE SHIPPING PIN AND INSTALL THE INTAKE HOSE INTO THE QUICK CONNECT ON THE BACK OF THE COMPRESSOR. (FIGURES 29, 30)



FIGURE 29



FIGURE 30

9. REMOVE THE TWO (2) SHIPPING PINS, ONE ON THE COMPRESSOR, ONE ON THE DISTRIBUTION BLOCK, AND INSTALL THE NEW "J" SHAPED HOSE PROVIDED WITH THE KIT. (FIGURES 31, 32, 33, 34, 35, 36)



FIGURE 31

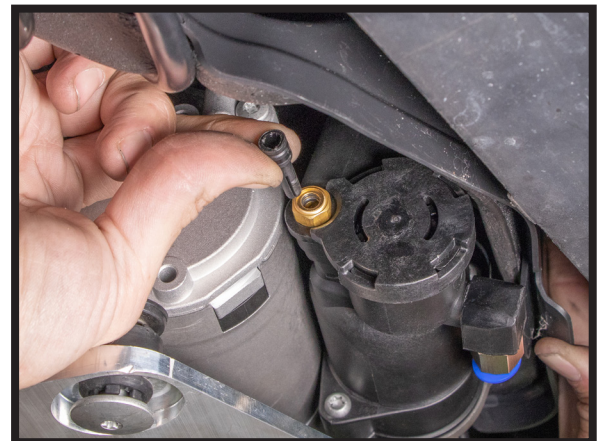


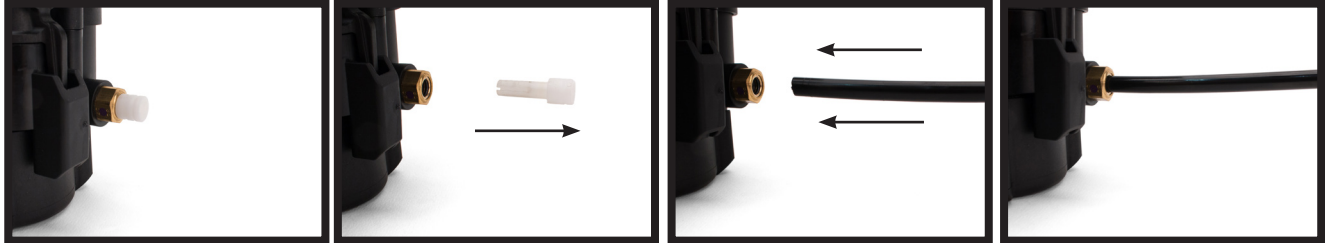
FIGURE 32



FIGURE 33



FIGURE 34



FIGURES 35



FIGURE 36

10. CONNECT THE TWO (2) ELECTRICAL PLUGS FROM THE COMPRESSOR TO THE VEHICLE AND SECURE BACK IN PLACE. (FIGURES 37, 38)



FIGURE 37



FIGURE 38

11. CLIP THE BOTTOM HALF OF THE PLASTIC COVER TO THE TOP HALF AND SECURE WITH THE THREE PROVIDED SCREWS. (FIGURES 39, 40)



FIGURE 39



FIGURE 40

12. LOWER THE VEHICLE.
13. REPLACE THE RELAY WITH THE ONE PROVIDED IN THE KIT. (FIGURE 41)

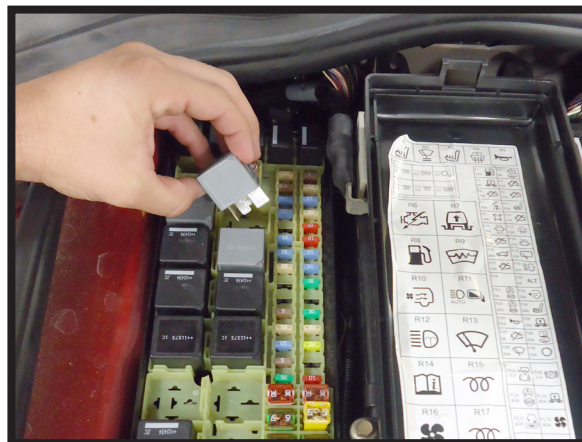


FIGURE 41



*Vehicles MUST be re-programmed
with software by your
Land Rover dealer if replacing a
Hitachi® compressor!*

*Failure to do so will void warranty
and may severely damage the compressor.*



WARNING



CRACKED AIR SPRINGS MUST BE CHANGED TO VALIDATE THE WARRANTY ON THE COMPRESSOR

PLEASE READ ADDITIONAL WARRANTY INFORMATION ON THE BACK OF YOUR INVOICE



PROPER PROCEDURE FOR ASSESSING YOUR AIR SPRINGS CONDITION:

1. Turn off air suspension switch if equipped.
2. Refer to owner's manual for proper lifting techniques and jacking points.
3. Raise the vehicle.
4. Inspect air springs for any type of cracks or excessive wear. Cracks in air springs are evident if they are leaking. This will cause the compressor to overheat from continuous operation.

Arnott[®] is committed to the quality of its products. If you have a question or problem with any Arnott product, please contact Arnott by calling **800-251-8993** during normal business hours or email techassistance@arnottinc.com.
(In the EU please call +31 (0)73 7850 580 or email info@arnotteurope.com)